

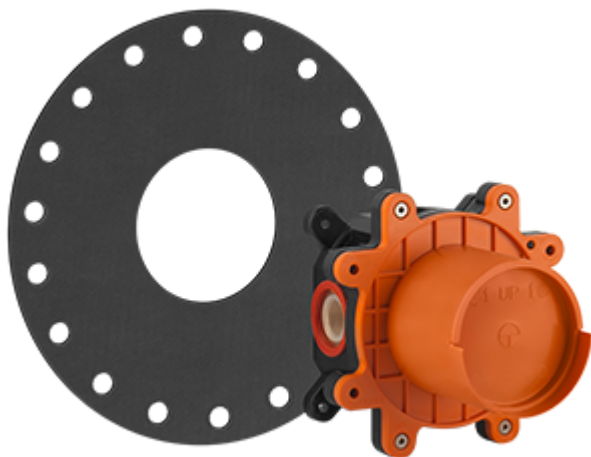
# 46112

Watertight built-in part for one-way mixer.

# GESI®

## Technical features

- Connection to supply net 1/2" G
- One exit
- Watertight



## Certifications

The official approvals of this item in standard Gessi version are  
(For additional approvals contact Gessi S.p.A.):

- A.C.S. (French Law)
- Polish Sanitary Law
- Russian Gost certification

## Available Finishes

### Technical Prescription

- working maximum pressure value 5 bar - in case of higher pressure, to use a pressure reducer
- Working pressure for an optimal installation: 3 bar
- Working water temperature not be higher than 70°C.
- In order to guarantee a long duration of the product and its total functionality install filter
- Test watertight and cleaning of the pipes before installing the tap.