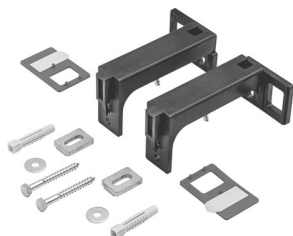


**DuraSystem® Mounting accessoires for single installation #
WD601600000**

|< 68 mm >|



Mounting accessoires for single installation	Dimension	Weight	Order number
depth-adjustable 130 - 204 mm, Scope of delivery, 2 Wall brackets, mounting accessoires, for drywall construction			
Colors			
00 White Alpin			
Variant			
	68 x 78 mm	0.900 kilogram	WD601600000
Installation accessories			
Toilet frame, Basic self-supporting, for drywall construction, suitable for panelling with plasterboards, powder-coated frame, for WC ceramics with a projection of <= 625 mm, adjustable feet 0-240 mm, mechanical front actuation, flattenings for optimal access of press tools, metre tear and center marker, tool-free assembly of the transparent service opening plate, Requirements of the leading standards of noise protection DIN 4109 and VDI 4100 can be achieved (in combination with noise reduction set # WD6015 000 000), Cistern, concealed cistern CE tested in accordance with EN 14055, maximum flush volume 9l, marking of filling height, Dual flush technology, adjustable flush volume, insulated against condensation, throttle for adjustment of the flushing flow, Scope of delivery, PE-wall-mounted toilet connection bend DN 90/90, PE-wall-mounted toilet connection set DN 90, wall-mounted toilet fastening set M12, PE-wall-mounted toilet reduction DN 90/110 for outlet bend, 2 cover caps, pre-installed toilet frame for wall-mounted toilet	500 x 1148 mm	14.400 kilogram	WD1020

DuraSystem® Mounting accessoires for single installation #
WD601600000

|< 68 mm >|

<p>Toilet frame, Basic 99 cm self-supporting, for drywall construction, suitable for panelling with plasterboards, powder-coated frame, for WC ceramics with a projection of <= 625 mm, adjustable feet 0–240 mm, mechanical top or front actuation, tool-free assembly of the transparent service opening plate, Requirements of the leading standards of noise protection DIN 4109 and VDI 4100 can be achieved (in combination with noise reduction set # WD6015 000 000), Cistern, concealed cistern CE tested in accordance with EN 14055, maximum flush volume 9l, marking of filling height, Dual flush technology, adjustable flush volume, insulated against condensation, throttle for adjustment of the flushing flow, Scope of delivery, PE-wall-mounted toilet connection bend DN 90/90, PE-wall-mounted toilet connection set DN 90, wall-mounted toilet fastening set M12, mounting accessoires for lightweight construction, PE-wall-mounted toilet reduction DN 90/110 for outlet bend, 2 cover caps, pre-installed toilet frame for wall-mounted toilet</p>	500 x 990 mm	12.900 kilogram	WD1019
<p>Toilet frame, Basic 84 cm self-supporting, for drywall construction, suitable for panelling with plasterboards, powder-coated frame, for WC ceramics with a projection of <= 625 mm, adjustable feet 0–240 mm, mechanical top or front actuation, tool-free assembly of the transparent service opening plate, Requirements of the leading standards of noise protection DIN 4109 and VDI 4100 can be achieved (in combination with noise reduction set # WD6015 000 000), Cistern, concealed cistern CE tested in accordance with EN 14055, maximum flush volume 9l, marking of filling height, Dual flush technology, adjustable flush volume, insulated against condensation, throttle for adjustment of the flushing flow, Scope of delivery, PE-wall-mounted toilet connection bend DN 90/90, PE-wall-mounted toilet connection set DN 90, wall-mounted toilet fastening set M12, mounting accessoires for lightweight construction, PE-wall-mounted toilet reduction DN 90/110 for outlet bend, 2 cover caps, pre-installed toilet frame for wall-mounted toilet</p>	500 x 840 mm	11.900 kilogram	WD1017

All drawings contain the necessary measurements which are subject to standard tolerances. They are stated in mm and are non-binding. Exact measurements, in particular for customised installation scenarios, can only be taken from the finished piece.